

Main orphans window



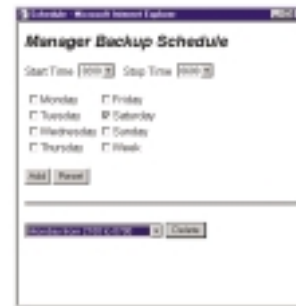
View by magazine with 'pull down' to view each CD/DVD



Diamond CD/DVD magazine support



Configuring for disaster recovery



Scheduling a backup

File system & Media Support

Logical file system format	Media Type			
	CD-R	CD-ROM	DVD-RAM	DVD-ROM
Plasmon	N/A	N/A	Read/Write	N/A
ISO 9660 (Interchange Level 2)	Read/Write	Read	N/A	Read
ROMEO/JOLIET	Read/Write	Read	Read/Write	Read
UDF 1.02	N/A	N/A	Read/Write	N/A
UDF 1.5	Read/Write	N/A	N/A	N/A
Archive file System	N/A	N/A	Read/Write	N/A



European Headquarters
 Plasmon Data Limited, Whiting Way, Melbourn, Hertfordshire SG8 6EN, UK.
 Tel +44 (0)1763 262963 Fax +44 (0)1763 264444
 Email: sales@plasmon.co.uk

www.plasmon.co.uk

Regional Sales Offices

Belgium
 Plasmon Data sa/nv
 Draaiboomstraat 6
 2160 Wommelgem
 Tel + 32 (0)3 355 1980
 Fax + 32 (0)3 354 2155
 plasmon.ne@plasmon.co.uk

France
 Plasmon Data Sarl
 6 avenue Charles de Gaulle -
 Hall B, 78150 LE CHESNAY
 Tel +33.(0)1.39.23.94.80
 Fax +33(0)1.39.23.94.81
 plasmon.france@plasmon.co.uk

Germany
 Plasmon Data Limited
 Frankfurter Ring 193A
 D-80807 Munich
 Tel +49 89 3246 390
 Fax +49 89 3246 3911
 plasmon.ce@plasmon.co.uk

Italy
 Plasmon Data SRL
 Via Marsala, 36 (Torre B),
 21013 Gallarate (VA)
 Tel +39 0331 782904
 Fax +39 0331 782905
 plasmon.se@plasmon.co.uk



**Storing More Of Your
Digital World™. Flexibly.**

STORING MORE OF YOUR DIGITAL WORLD.™

Diamond for Windows NT and Windows 2000 manages DVD, CD-ROM, and CD-R mass storage jukeboxes in today's business environments. Scalable from a single jukebox with 120 slots to multiple libraries with thousands of slots, Diamond supports a wide range of configurations.

Diamond supports a full UDF platform across all 120mm media types offering 'drag and drop' functionality to CD and DVD technologies.

Optical disk drives and jukeboxes require special software so that they can be used in a similar fashion to hard disk drives by users. This applies particularly to jukeboxes because of their unique characteristics.

Diamond presents one or more jukeboxes as a single drive letter. This drive letter is selected using the supplied drive mapper utility. Once Diamond is running, and the jukeboxes are mapped, conventional operating system commands and application programs work in the same way as they do with traditional hard disks. Each side of each disk in the jukebox is represented as a subdirectory at any level beneath the designated drive letter and multiple disks can be dynamically mounted to the same directory, allowing the contents of a single directory to include multiple optical disks.

Once mapped to a drive letter using the "Drive Mapper" utility, the optical devices managed by Diamond may be shared to network clients using Explorer. Thus, a wide range of network clients can access the optical devices.

A database of the files in the jukebox is maintained on the hard disk, eliminating the need to move disks into the drive until a request is made to read or write data. This means the whole jukebox file structure may be browsed without moving any of the discs.

Diamond may also be administered by a remote web Graphical User Interface (GUI), which allows a range of commands to be issued to the jukebox. These commands cover areas such as disc export and jukebox status.

There is a repair utility allowing the user to recover files if disc corruption should occur.

Additionally, configurable caching is provided to allow the optimisation of Diamond's read and write performance, for particular modes of use.

Diamond is built on a fourth generation code offering unprecedented high availability and disaster recovery features.

- Supports DVD-RAM, DVD-ROM, CD-ROM and CD-R
- Available for Windows NT and Windows 2000
- Full UDF support on all media types
- High speed UDF hybrid formats for maximum performance
- ISO image burning
- 4.7GB/9.4GB DVD drive support
- Rotate station support
- Complete magazine management
- Offline media tracking



FLEXIBLY.

- **Local & Remote Database Back-up:** Primary and secondary copies of the database can be maintained for no single point of failure.
- **Replication:** Files, folders, media and Jukeboxes can be configured for replication.
- **Security:** Windows native security features are applied to the library.
- **Dynamic Rescan:** Recreating the file database dynamically providing high availability.
- **Transaction Logging:** Automatically repairs the index in the case of a host system failure.
- **Off Line Volume Management:** Diamond will allow discs to be physically exported from the Jukebox and put into a media store cupboard. The media is still shown as being in the jukebox, and when a file is requested that is on an "Off-line" disk then an event message is sent to the administrator to advise that the media has been requested and needs to be imported back into the Jukebox.
- **Configurable Caching:** Increases performance of your unique storage environment.
- **Virtual File System:** Logical, user-perspective view of the location of files.
- **Unicode Support:** Freedom to name files in the way you want.
- **Wide Logical File System Format Support:** Supports UDF versions 1.02 and 1.5 (the industry standard file system for optical media), Archive file system (proprietary) and Plasmon file system (proprietary).
- **Deep Mounts:** Disks can be mounted anywhere within the Jukebox directory (including within other disks).

Supported Products

Plasmon D120

with DVD-RAM, CD-ROM and CD-R drives plus rotate station

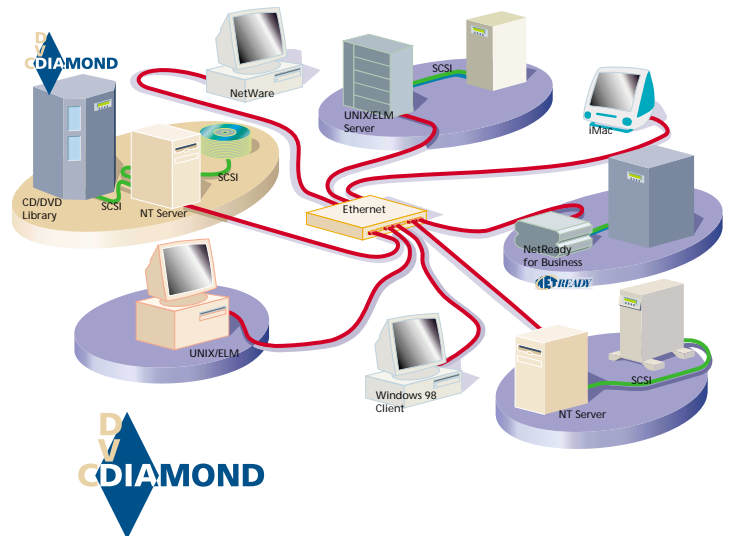
Plasmon D240

with DVD-RAM, CD-ROM and CD-R drives plus rotate station

Plasmon D480

with DVD-RAM, CD-ROM and CD-R drives plus rotate station

Other models on request.



call centres



prepress and graphic services



advertising and design



video distribution



Storing More Of Your Digital World™. Flexibly.