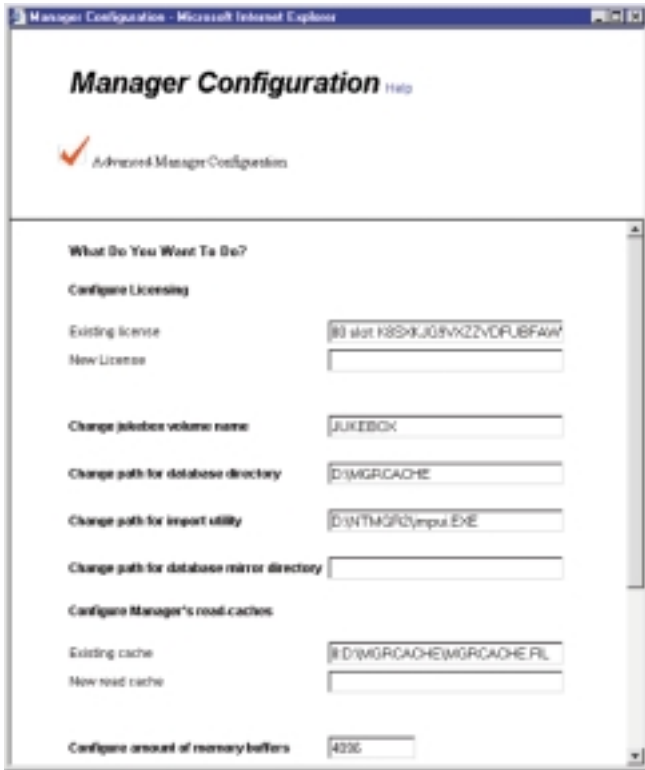
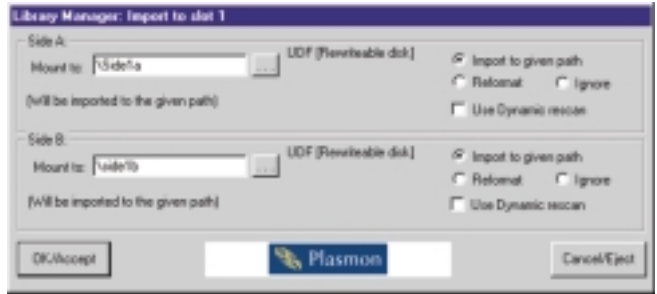


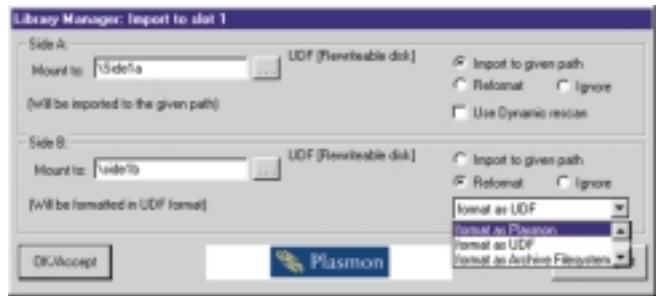
TECHNICAL SPECIFICATIONS – ENTERPRISE LIBRARY MANAGER



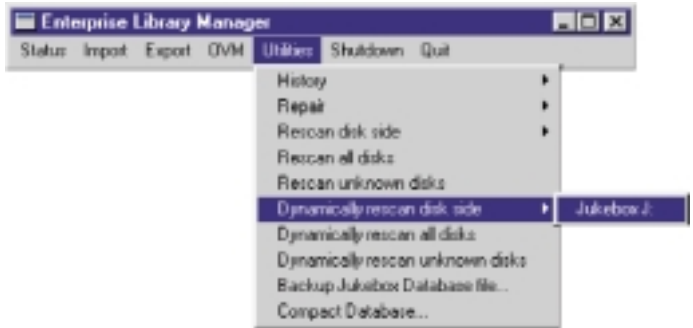
Configuration *MANAGER* Screen



Disk Import application after importing formatted disk



Disk Import application after choosing reformat side B



Dynamically rescan disks



Menu under Import From slot

| Logical Filesystem Format | Media Type | MO/WORM |
|---------------------------|--|------------|
| Plasmon Filesystem | MO/Rewritable | Read/Write |
| UDF 1.02 | Read/Write | Read/Write |
| Corel for DOS | Read | Read |
| Corel Network Manager | | |
| Archive Filesystem | Read/Write (Note: no space reclaimed) | Read/Write |
| Filesystem Security | ELM provides full security support that is managed from File Manager, as with NTFS | |
| Service Support | ELM can run as a Win32 Service, starting automatically at boot time. | |
| Control Panel | SCSI device configuration is controlled from a new Control Panel Application | |



European Headquarters
 Plasmon Data Limited, Whiting Way, Melbourn, Hertfordshire SG8 6EN, UK.
 Tel +44 (0)1763 262963 Fax +44 (0)1763 264444
 Email: sales@plasmon.co.uk

www.plasmon.co.uk

Regional Sales Offices

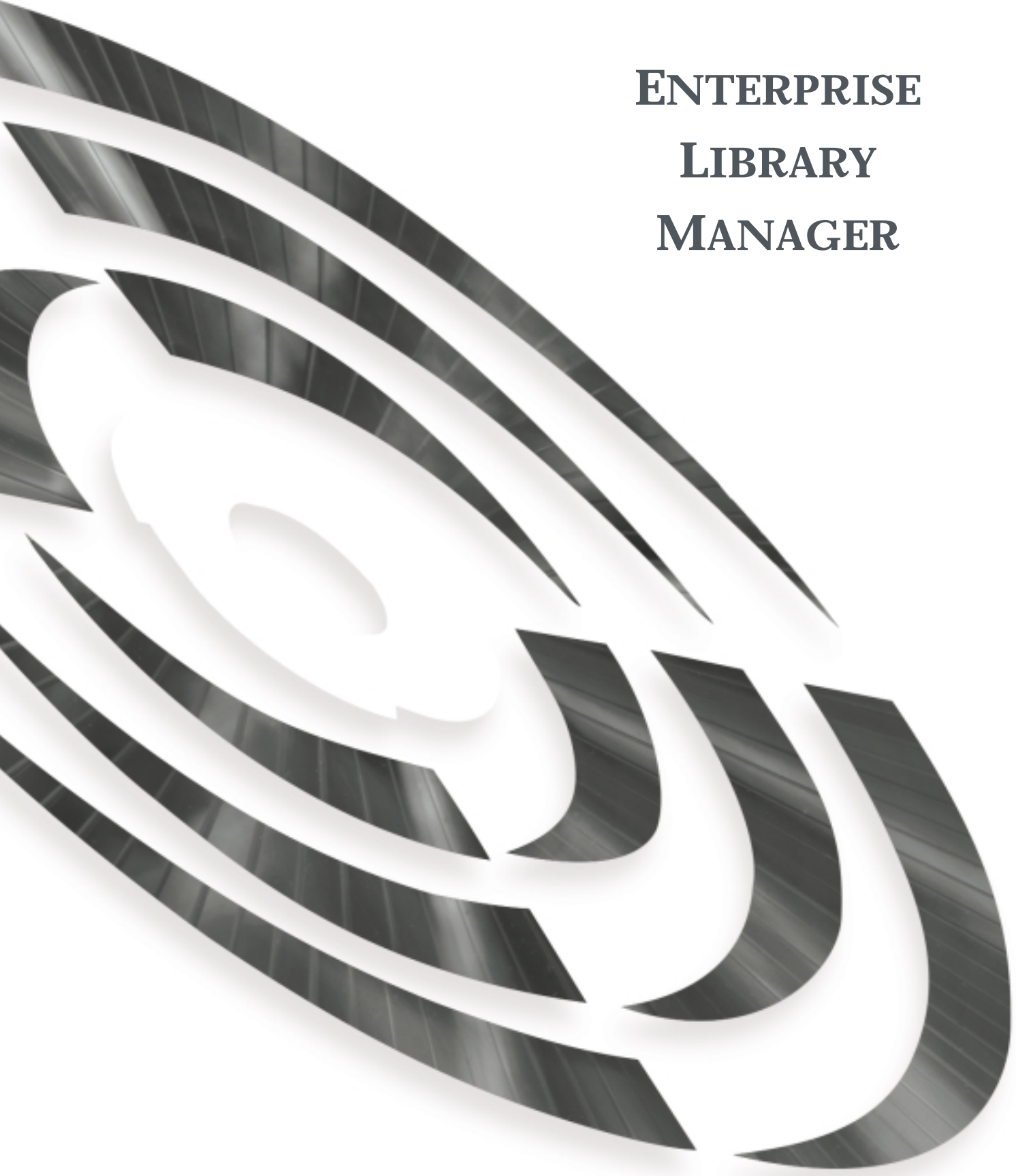
Belgium
 Plasmon Data sa/nv
 Draaiboornstraat 6
 2160 Wommelgem
 Tel + 32 (0)3 355 1980
 Fax + 32 (0)3 354 2155
 plasmon.ne@plasmon.co.uk

France
 Plasmon Data Sarl
 6 avenue Charles de Gaulle -
 Hall B, 78150 LE CHESNAY
 Tel +33.(0)1.39.23.94.80
 Fax +33(0)1.39.23.94.81
 plasmon.france@plasmon.co.uk

Germany
 Plasmon Data Limited
 Frankfurter Ring 193A
 D-80807 Munich
 Tel +49 89 3246 390
 Fax +49 89 3246 3911
 plasmon.ce@plasmon.co.uk

Italy
 Plasmon Data SRL
 Via Marsala, 36 (Torre B),
 21013 Gallarate (VA)
 Tel +39 0331 782904
 Fax +39 0331 782905
 plasmon.se@plasmon.co.uk

ENTERPRISE LIBRARY MANAGER



**Storing More Of Your
Digital World™. Flexibly.**

STORING MORE OF YOUR DIGITAL WORLD.™

Enterprise Library *MANAGER* (ELM) provides seamless support for MO Jukeboxes on a Windows NT and Windows 2000 Servers. It allows data to be written directly to the Jukebox and read from a read cache for maximum data integrity and performance.

Optical disk drives and jukeboxes require special software so that they can be used in a similar fashion to magnetic devices by the host computer. This applies particularly to jukeboxes and WORM media because of their unique characteristics.

ELM controls disk movement within the jukebox so that file operations on the optical media are similar to how they would be on your local hard disk. The fact that the user is accessing the jukebox is transparent within certain limitations that are primarily related to mechanical delays.

ELM presents one or more jukeboxes as a single drive letter. This drive letter is selected using the supplied drive mapper utility. Once ELM is running, and the optical devices are mapped to a drive letter, conventional operating system commands and application programs work in the same way as they do with traditional hard disks. Each side of each disk in the jukebox is represented as a subdirectory at any level beneath the mounted

drive letter and multiple disks can be dynamically mounted to the same directory, allowing the contents of a directory to span optical disks.

A database is created on the Server which allows rapid response to any file in under 10 seconds. Standard "Directory" functions can be performed without any movement of the media.

Once mapped to a drive letter using the "Drive Mapper" utility, the optical devices managed by ELM may be shared to network clients using Explorer. Thus, a wide range of network clients can access the optical devices.

A Jukebox Control Program (JCP) is provided, allowing local administration of jukeboxes, and remote access is also provided through a web Graphical User Interface (GUI). The JCP and GUI have a number of functions, including listing the contents of the jukebox and exporting/importing disks from the jukeboxes.

ELM offers many unique sophisticated features, which have been developed over the 10 years that the software solutions have been manufactured.

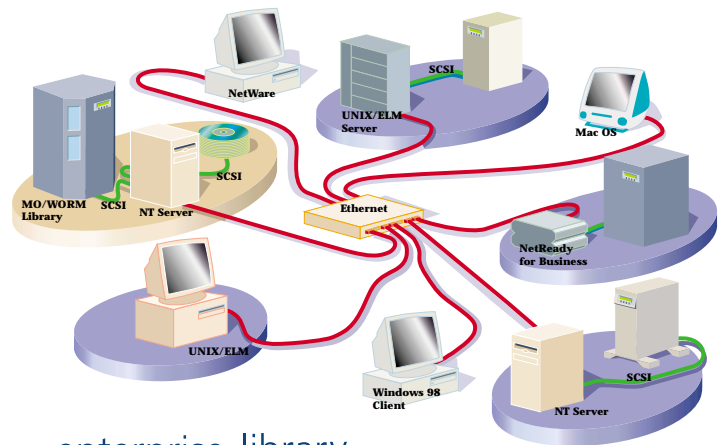


FLEXIBLY.

- **Local & Remote Database Back-up:** Primary and secondary copies of the database can be maintained for no single point of failure.
- **Replication:** Files, folders, media and Jukeboxes can be configured for replication.
- **Security:** Windows NT's native security features are applied to the library.
- **Dynamic Rescan:** Recreating the file database dynamically providing high availability.
- **Transaction Logging:** Automatically repairs the index in the case of a host system failure.
- **Off Line Volume Management:** ELM will allow discs to be physically exported from the Jukebox and put into a media store cupboard. The media is still shown as being in the jukebox, and when a file is requested that is on an "Off-line" disk then an event message is sent to the administrator to advise that the media has been requested and needs to be imported back into the Jukebox.
- **Configurable Caching:** Increases performance of your unique storage environment.
- **Virtual File System:** Logical, user-perspective view of the location of files.
- **Unicode Support:** Freedom to name files in the way you want.
- **Wide Logical Filesystem Format Support:** Supports UDF 1.02 (the industry standard file system for optical media), Archive file system (proprietary) and Plasmon file system (proprietary). ELM will also read legacy data written using the Corel format.
- **Deep Mounts:** Disks can be mounted anywhere within the jukebox directory (including within other disks).
- **History Function:** Allows the system to be rolled back should an audit trail be required.

Supported Products

Plasmon M20
Plasmon M32
Plasmon M52
Plasmon M104
Plasmon M156
Plasmon M258
Plasmon M500
Plasmon G64
Plasmon G104
Plasmon G164
Plasmon G238
Plasmon G438
Plasmon G638
HP mx Series
HP ex Series
HP fx Series
HP st Series
IBM 3995 series



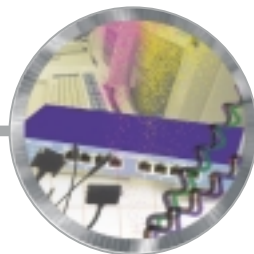
enterprise library
MANAGER



call centres



telecommunications



networking



e-commerce



Storing More Of Your
Digital World™. Flexibly.